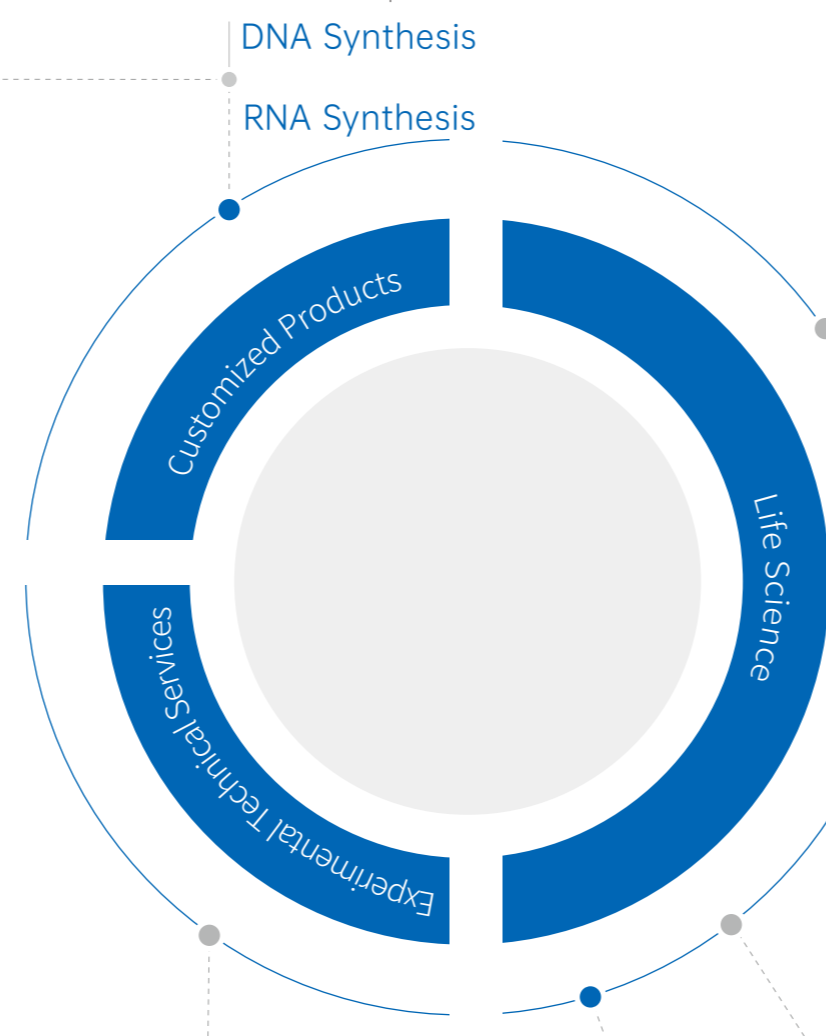



SCIENTIFIC RESEARCH PRODUCTS & SERVICES


Sangon Biotech is committed to providing products and technical services in the field of life science research, including more than 30,000 life science products and life science experiment operation and analysis services.






Protein

- The expression of E. coli protein
- The expression of Pichia yeast protein
- Baculovirus protein expression
- Mammalian cell protein expression



Gene Synthesis

- RapidGene Synthesis
- NormGene Synthesis
- HTSGene Synthesis
- MutaLABGene
- LCGene Synthesis
- SegsGene Synthesis
- Gene site-directed mutation
- Codon optimization
- Plasmid extraction
- Cloning and subcloning



DNA Synthesis

- nmole micro primers
- IE-HPLC, 2X HPLC, PAGE+HPLC super purity primers
- Synthesis of different DNA Modified primers
- HAP quick primers
- ULTRAPAGE, HPLC high purity primers
- IVD primer


Antibody

- Antigen
- Monoclonal & Polyclonal antibody
- Antibody Pairing
- ELISA KIT R&D
- Colloidal gold kit



Peptide

- Different purity range
- N or C end modified
- Special amino acid modification
- Fluorescent/staining marked
- Cyclic peptides
- Anneal fluorescent marked
- Conjugated carrier protein
- Catalog peptide



Molecular Related

- Molecular cloning
- qPCR
- Digital PCR
- SNP
- STR
- Strain identification
- Virus packaging and RNA interference
- Gene modification and Cas9
- Gene chip


NGS

- RNA-Seq
- Small RNA
- Exon capture sequencing
- Metagenome
- de novo
- Whole genome resequencing
- CHIP-SEQ





Protein or Immunology Related

- Amino acid sequencing
- 2-D gel electrophoresis
- Mass spectrum
- iTRAQ
- Metabolomics
- ELISA detection
- Immunohistochemistry
- Western Blot related




Cell Analysis

- Cell culture
- Cell transfection
- Cell proliferation(MTT)
- Cell apoptosis (TUNEL)
- Transwell Cell migration experiment



DNA Sequencing

- Sanger sequencing
- Clone sequencing
- Cosmid/Fosmid/BCA end sequencing



Cell Related

- Culture
- Animal serum
- Cell apoptosis, toxicity and proliferation detection
- Cell line



Protein Related

- Separation and extraction
- Electrophoresis and staining
- Recombinant proteins
- Detection and quantification
- Protein Marker
- Purification



Biochemicals

- Biochemical reagent
- Enzyme
- Microbiological culture
- USP Reagents
- Buffer

Antibody

- Catalog antibody
- Immunomagnetic beads
- ELISA related

Molecular Related

- Nucleic acid Extraction
- PCR related
- Electrophoresis and staining
- Clone related
- DNA Marker

Labwares

- Pipette Tips
- Cell culture
- Industrial labwares
- Centrifuge tubes
- Purification column
- Others
- PCR tubes & plates






INDUSTRIAL MEDICAL AND DIAGNOSTIC MATERIALS

Sangon Biotech receives millions of orders from IVD, CRO, genetic diagnosis, pharmaceutical, biotechnology and other enterprises at home and abroad every year, and continuously optimizes the production process, the raw materials used in production or quality inspection meet the cleanliness requirements for medicinal or diagnostic grade.

- Glycine, Ampicillin, Kanamycin sulfate, G418, Urea, IPTG, GSH, Glycerol, Ethanolamine, Tris



Pharmaceutical materials

IVD Sample processing materials

- Guanidine hydrochloride, Guanidine thiocyanate, Proteinase K, DTT, SDS, Triton X-100

IVD PCR materials

- dNTPs, dUTP, HotStart Taq DNA Polymerase, Uracil-DNA Glycosylase, Reverse Transcriptase, Magnesium fluoride, RNase H, RNase Inhibitor

IVD NGS materials

- Reverse Transcriptase, T4 DNA Polymerase, T4 Polynucleotide Kinase, Klenow Fragment, A-Tailing Enzyme, T4 DNA Ligase, WGS Ligase, Bst DNA Polymerase

DNA Purification

- Column • Plates
- Deep Well Plates • Sample Plates

PCR Detecting

- PCR tubes
- PCR plates
-

Reagent storage tube/bottle

Centrifuge tubes

- Microcentrifuge tubes
- Centrifuge tubes
-

Tubes/Bottles

- Cryogenic Microtubes
- Sample tubes
- Plastic Bottles

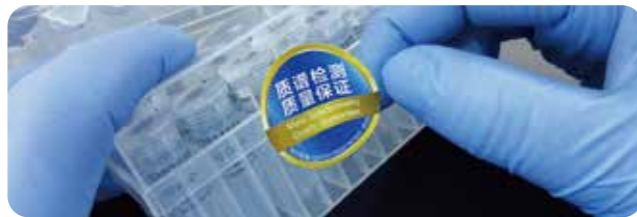


INDUSTRY REAGENTS MATERIALS

INDUSTRY PRIMERS & PROBES

NGS Primers & Probes

- Ensure extremely low base error rate
- NGS Adaptor Primer, Cross contamination rate $\leq 0.05\%$
- Control batch-to-batch variation
- Regular quality tracking



IVD qPCR Primers & Probes

- 100,000 level workshop, ISO13485, GMP
- HPLC_CE(IVD), Purity guarantee, Avoid exogenous pollution
- Regular quality tracking
- Additional QC: Ex/Em, NTC, Batch-to-batch difference detection

INDUSTRIAL LABWARES

Industrial Protection and Cleaning

- Gloves
- Wipe cloth
- Detergent

Pipetting Consumables

- Normal Tips
- Filter Tips
- Racked Tips

Workstation Tips

- Automated Pipette tips